



Reliance

Orthodontic Products, Inc.

www.RelianceOrthodontics.com





Reliance Orthodontic Products, Inc.

1540 West Thorndale Ave.
PO Box 678
Itasca, IL 60143 USA

1-800-323-4348

Phone: 1-630-773-3580
Fax: 1-630-250-7704

Please email any questions or comments to
pgange@RelianceOrthodontics.com
or
paulgangejr@RelianceOrthodontics.com

TERMS AND CONDITIONS

ORDERING

To order Reliance Orthodontic Products, simply contact our home office Toll Free (in U.S. and Canada) at 1-800-323-4348 or 1-630-773-3580. You can also order through our secure website at www.RelianceOrthodontics.com. **There is a minimum of \$25.00 on all orders.**

SHIPPING

All prices are F.O.B. Itasca, and are shipped via FedEx. All shipping is billed with the order. Alternate shipping services are available. Please call for more information.

EXPORT

Export orders must be paid for in advance by proforma invoice.

TERMS

Net 30 days. Illinois residents please add 1.75% sales tax. An invoice is enclosed with each shipment and payment should be made from this invoice. Any outstanding balance will be subject to a finance charge of 1.5% per month. All payments are due in U.S. funds

EXCHANGES or REFUNDS

Your satisfaction is Guaranteed! Reliance Orthodontic Products, Inc. guarantees that its products are of the highest quality and workmanship. If at any time prior to its expiration date your adhesive system fails to perform in a manner not consistent with the product, we will replace the remaining product with new material free of charge or issue a credit for the remaining product. **Please check your order for accuracy. Any discrepancies must be reported to Reliance within 7 days.** No refunds, credits or replacement will be issued after 30 days unless the product is deemed defective by Reliance Orthodontic Products, Inc. Products that are being returned to Reliance Orthodontic Products, Inc. must have a prior Return Authorization Number (RMA.) All products being returned for credit or replacement must be sent postage paid with a copy of your invoice and your RMA number clearly visible on the package, or the package will be refused by Reliance Orthodontic Products, Inc. A restocking fee may be applicable.

Table Of Contents

Education	3
Adhesion Booster - Protective Sealant	4-5
Light Cure Bracket Adhesives	6-7
Band Cements	8-9
Chemical Cure Adhesives	10-11
Tooth Preparation	12-14
Clean-Up & Polishing	15
Lingual Retention	16-18
Specialty Procedures	19-20
Restorative Solutions	21
Indirect Bonding	22
Accessories	23



All Reliance products are proudly manufactured in the U.S.A.

“Reliance is pleased to introduce to the profession the first website dedicated to improving clinical bonding results: **RelianceU.tech**.

Reliance University continues our 40 year commitment to improving orthodontic bonding success. We hope you find it helpful, but if any clarification is desired, please email us direct.”

Best Regards,
 Paul Gange - pgange@relianceorthodontics.com
 Paul Gange Jr. - paulgangejr@relianceorthodontics.com

RELiance UNIVERSITY

The First Website Dedicated To Bonding Education

Bonding Protocols Explained and Demonstrated

- Refine clinical techniques
- Discover new *pearls*
- Clarify bonding to all surfaces
 - Normal enamel
 - Atypical enamel
 - Stainless
 - Gold
 - Acrylic
 - Porcelain
 - Lithium Disilicate
 - Dentin
 - Cementum
 - Amalgam
 - Pontics
 - Composite
 - Zirconia
- Define product applications
 - Adhesives
 - Sealants
 - Enhancers
 - Etchants
 - Conditioners
 - Cements

Bonding Solutions

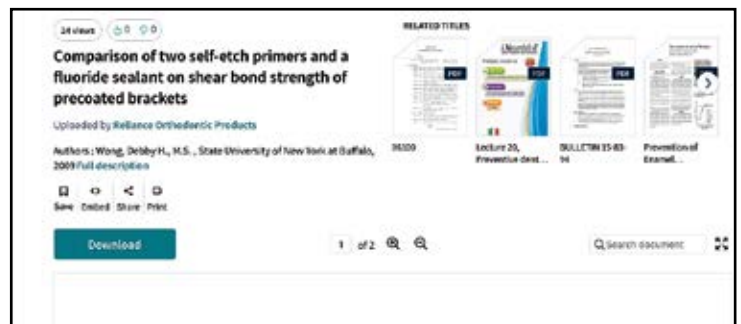
- Staff training
- Literature support
- AAO lectures
- Webinars
- Live streams
- Bonding bulletin



RelianceU Homepage



Videos



Studies

<http://RelianceU.tech>

Assure® Plus

All Surface Light Cure Bonding Primer And Enhancer

The Most Versatile Resin Ever Developed

- Enhances bond strength on all surfaces
- Tolerates moisture contamination
- Primes and conditions any tooth surface for bonding
- Effective on any enamel type
- Effective on any artificial substrate
- Eliminates hydrofluoric acid with porcelain crowns

Clinical Applications

- Normal or atypical enamel
- Dentin or cementum
- Eliminates additional conditioners with:
 - Stainless
 - Composite
 - Amalgam
 - Acrylic
 - Gold
 - Pontics
- Eliminates hydrofluoric acid application with:
 - Porcelain*
 - Zirconia
 - Lithium Disilicate



Available in
2 or 6 ml bottles



OR 50/100 ct
Unidose Packaging

Order Information

6 ml Assure® Plus All Surface Bonding Resin	#PLUS
2 ml Assure® Plus All Surface Bonding Resin	#PLUS2ML
50 Pack Assure® Plus 0.20 ml Unidose (10 ml)	#UAP50
100 Pack Assure® Plus 0.20 ml Unidose (20 ml)	#UAP100

Note:

* Porcelain Conditioner appears on page 13

The Evolution Of Orthodontic

Adhesion Boosters



Plastic Conditioner



Metal Primer



Porcelain Conditioner

1980

Chemical Cure Sealant

1985

Light Cure Booster

Enamel Protective Sealants



Maximum Cure® Sealant



Light Bond™ Sealant

PRO SEAL® & L.E.D. PRO SEAL®

Light Cure Highly Filled Sealant

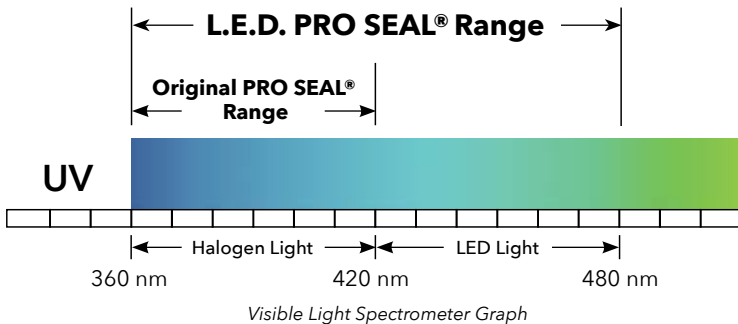
Enamel Protection From Start To Finish

- Two year surface protection
- University tested in over 15 studies and clinically proven
- Sets without oxygen inhibited layer - smooth, hard finish
- Fluoresces under UV light
- Patented catalyst system

Clinical Applications

- Routine enamel protection
- Hygiene challenged patients
- Mitigates decalcification
- Can be applied under bracket as a primer or around bracket

Pro Seal® Light Curing Wavelengths



Original



Original Pro Seal cures in 360 to 420 NM range

L.E.D



L.E.D Pro Seal cures with any curing light, including L.E.D

Order Information

6 ml L.E.D. PRO SEAL®	#LEDPRO
6 ml PRO SEAL®	#PRO
UV Disclosing Light	#UVML

Note:

- Pro Seal instructional video available at RELIANCEU.TECH

Bonding Resins

Chemical Cure Booster



Enhance™ A & B

Light Cure Booster



Enhance™ L.C.

All Surface Enhancer /Primer



Assure®

1990

2005

2010

Light Cure Booster



Light Bond™ Filled Sealant

Filled Sealant



PRO SEAL®

TODAY

ASSURE® PLUS

Bonds To All Artificial Surfaces

Strength



- One Bottle Does It All

L.E.D. PRO SEAL®

Protects Enamel

Protection



- 2 year protection
- Cures with LED lights

GoTo[®] Light Cure Bracket Adhesive

Newly Developed - Superior Working Properties

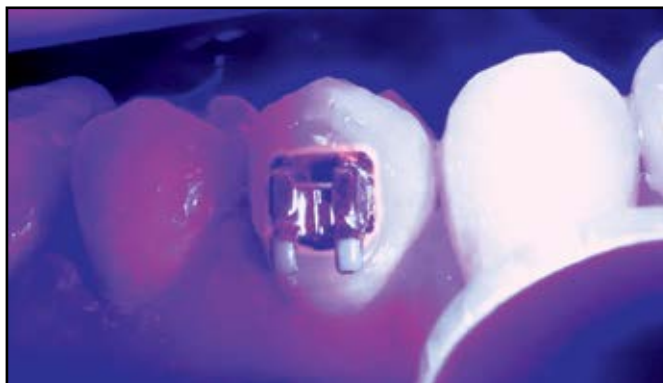
- Proven bond strength and consistency
- Unique viscosity easily penetrates bracket pads
- No bracket drift - stays in place until cured
- New proprietary microfiller construction
- One piece flash removal - "ropes" off bracket periphery
- Translucent finish matches any tooth shade
- Maximum bond strength
- Easy removal and cleanup
- UV disclosing agent - fluoresces on tooth

Clinical Applications

- Bracket and tube bonding
- Fixed lingual retainer bonding
- Bonds all metal, ceramic and composite attachments
- Aligner attachments



Translucent



Blacklight Fluorescent

Note:

- Etchants and Conditioners appear on page 13
- Bonding Accessories appear on page 23



Push Syringe



Syringe Tips

Recommended primer with
GoTo[®] Adhesive is
Assure[®] Plus

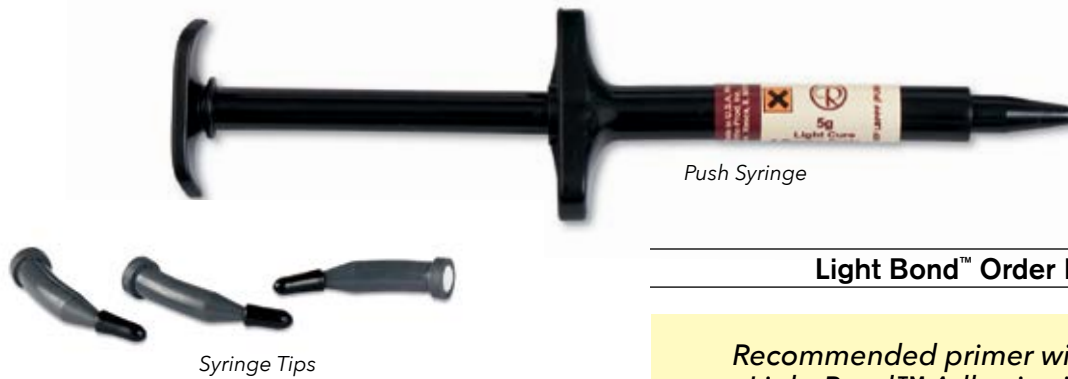


Order Information

4 g Paste Syringe	#GTP
4 g Paste In Tips	#GTT

Light Bond™

Light Cure Bracket Adhesive



Push Syringe

Syringe Tips

Light Bond™ Order Information

Recommended primer with Light Bond™ Adhesive is Assure® Plus



Time Tested Performance

- Unrivaled bond strength
- Highly filled paste
- Smooth tacky viscosity
- Consistent successful bonds
- Easy flash and debonding cleanup
- Designed for Doctor or staff bracket placement without drift

Clinical Applications

- Routine bracket and tube bonding
- Intraoral bonding of metal, ceramic or composite attachments
- Indirect bonding to stone/resin models

Note:

- Light Bond sealant appears on page 13
- Etchants and Conditioners appear on page 13
- Bonding Accessories appear on page 23
- Light Bond™ kit and components available without fluoride upon request

Light Bond™ Paste In Syringe

All syringe applicators contain 5 g of paste w/fluoride

Paste Choices	Applicator Choices	
	Push Syringe	Syringe Tips
Regular Viscosity Syringe*	#LBPPF	#LBPTF
Medium Viscosity Syringe	#LBMPPF	#LBMPTF
Thin Viscosity Syringe	#LBTPPF	#LBTPTF
Blue Tinted Syringe	#LBBPPF	#LBBPTF

* Most Popular Choice

Light Bond™ Kit

Light Bond™ kit includes:

- 20 g Paste w/Fluoride
- 23 g Liquid Etchant
- 2 x 3cc Sealant Resin
- Mixing Pads, Spatulas & Brushes

Push Syringe Kit

Regular With Assure Plus	#LBEPF W/PLUS
--------------------------	---------------

Pad Lock®

Light Cure Fluorescing Adhesive

Bonds Chemically and Mechanically

- Bonds chemically to metal bases
- Paste fluoresces under black light for flash and debonding cleanup

Clinical Applications

- Metal bracket and tube bonds
- Indicated for fine grade mesh bases
- Non-fluoride upon request



Order Information

Pad Lock® Push Syringe Kit with fluoride*	#PLPKF
Pad Lock® Push Syringe Kit with Assure*	#PLPKFAS
4.5 g Pad Lock® Paste in Push Syringe with fluoride	#PLPF
4.5 g Pad Lock® Paste in Tips with fluoride	#PLTF

* Pad Lock® kits include:

- 20 g Paste w/Fluoride
- 23 g Liquid Etchant
- 2 x 3cc Sealant Resin
- Mixing Pads, Spatulas & Brushes

Ultra Band-Lok®

Light Cure Compomer Band Cement



Push Syringe

Industry Leader in Band Cement

- **SINGLE PASTE SYSTEM**
- **LIGHT ACTIVATED**
- **RESIN BASE GLASS IONOMER**
High fluoride release
- **NATURAL OR BLUE SHADE**
- **BONDS TO METAL**
Ultra Band-Lok® will bond chemically to stainless steel bands. Removal is all in one piece with cement in the appliance, making cleanup effortless
- **ALL PURPOSE CEMENT**
Ultra Band-Lok® can also be used to bond large acrylic appliances and as an occlusal build-up material

Clinical Applications

- **Band cementation**
- **Occlusal build ups**
- Occlusal build up instructional video available at RelianceU.tech
- **Acrylic appliances - Hyrax, MARA, RPE, etc.**
- Acrylic Appliance instructional video available at RelianceU.tech
- **Lab block out material**
- **Non-fluoride upon request**

ALSO AVAILABLE IN LUER LOC SYRINGE



Simplified Cleanup



Occlusal Buildup

Order Information

5 g Ultra Band-Lok® Syringe	#UBLPP
5 g Ultra Band-Lok® Syringe Blue shade	#UBLBPP
5 g Ultra Band-Lok® Luer Loc Syringe w/Dispensing Tips	#LLUBLP
5 g Ultra Band-Lok® Luer Loc Syringe Blue shade w/Dispensing Tips	#LLUBLBP
(50) Luer Loc Dispensing Tips	#TIPS50
(5) Luer Loc Dispensing Tips	#TIPS5

Band Lok® Dual Cure

Mix Paste Band Cement

The Original, Time-Tested Compomer Band Cement

- Bonds chemically to bands
 - Secure band cementation
 - Easy clean removal
- Self mix dual syringes
 - Tips mix and dispense paste
 - Proportional paste mix
 - Eliminates spatulating
- Dual cure - light and/or chemical
 - Four minute working time
 - Complete polymerization every time
- Natural or blue shade
- Contains fluoride *



Band Lok® Dual Cure Order Information

Dual Syringes: • 5gm Paste A / 5gm Paste B (Includes 15 Self Mix Tips)	Natural Shade	#SMBL
	Blue Shade	#SMBLB
Self Mix Tips (15)		#SMT
Screw Syringes: 6gm Paste		
Paste A Syringe	Natural Shade	#BLSA
	Blue Shade	#BLSAB
Paste B Syringe		#BLSB

Note:

* Band Lok® is available without fluoride upon request

Crown Lok®

Metal Crown Luting Cement

Secure Metal Crown and Band Cementation

- Bonds chemically to stainless steel
- Simplified removal and cleanup
- Two minute working time
- Syringe choices
 - Screw syringe
 - Dual syringe - self mix
 - Tips mix and dispense paste
 - Proportional paste mix
 - Eliminates spatulating
- Natural or blue shade
- Contains fluoride



Crown Lok® Order Information

Dual Syringes: • 5gm Paste A / 5gm Paste B • 15 Self Mix Tips	Blue Shade	#SMCLB
Self Mix Tips (15)		#SMT
Screw Syringes: 5gm Paste		
Paste A Syringe	Natural Shade	#CLSA
	Blue Shade	#CLSAB
Paste B Syringe		#CLSB

Glass Lok™

Dual Cure Glass Ionomer Band Cement

Hydrophilic Powder /Liquid Cement

- Secure band adhesion
- High compressive and tensile strength
- Bonds in wet or dry fields
- Resists washout from under bands
- Contains fluoride - protects enamel
- Bonds chemically to metal, reducing removal cleanup time
- Dual cure - chemical or light activated
- Natural or blue shade



Glass Lok Order Information

Glass Lok® Starter Kit*
Glass Lok® Blue Starter Kit*
Glass Lok® Powder (15 g)
Glass Lok® Liquid (15 cc)
Glass Lok® Liquid Blue (15 cc)

* Glass Lok® starter kit includes:

- 15 g Powder
- 15 cc Liquid
- Measuring Scoop
- Spatulas
- Mixing Pads

COMING SOON

Phase II®

Mix Paste Bracket Adhesive – Chemical Cure

Time Tested Consistency

- Microfilled paste
 - Unrivaled strength
 - Smooth, tacky viscosity
 - No bracket drift
- Self curing
 - Full polymerization
 - A&B mix system
 - 2 minute work time
- Easy removal and cleanup
- Contains fluoride

Clinical Applications

- Routine clinical bonding
- Bracket and tube bonding



Phase II® Dual Cure

Mix Paste Bracket Adhesive – Combines Chemical and Light Curing

Speed of Light Cure / Security of Chemical Cure

- Initial light cure option
 - 10 second exposure
 - Tacks bracket in position
 - Allows quick and accurate positioning
- Chemical cure - time activated
 - 4 minute chemical polymerization
 - Total polymerization under bases
- Contains fluoride



Note:

- Kits and components available w/o fluoride
- Etchants & conditioners appear on page 13
- Bonding accessories appear on page 23

Phase II® Order Information

Paste Components

Paste A 6 g Syringe	#1PSAF
Dual Cure Paste A 6 g Syringe	#1DCSAF
Paste B 6 g Syringe	#1PSB
Paste A 18 g Jar	#PJAF
Dual Cure Paste A 18 g Jar	#DCJAF
Paste B 18 g Jar	#PJB

Recommended primer with
Phase II® Adhesive is
Assure® Plus



Order Information

6 ml Assure® Plus #PLUS

Phase II® Kits

All Phase II® kits include:

- 18g Each Paste
- 7g Each A&B Resin
- 9g Etchant
- Spatulas, Applicators, Brushes, Mixing Well

Kits

Syringe Kit	#PSF
Jar Kit	#PJF

Excel®

Chemical Cure Specialty Adhesive

- Unsurpassed bond strength
- Thin, creamy consistency
- Extended working time
- Contains fluoride

Clinical Applications

- Indirect bonding adhesive
- Bonded acrylic appliances



Order Information

Excel® Regular Paste A in 6 g Screw Syringe with fluoride	#1ERSAF
Excel® Regular Paste B in 6 g Screw Syringe	#1ERSB

Rely•a•Bond®

No Mix Bracket Adhesive

1 Step/Contact Adhesive

- Contact cure - primer to paste
- Chemical cure - no light required
- Saves time and material
 - No mixing
 - Minimizes adhesive per bond
- Highly filled paste
 - Increased bond strength
 - Tacky viscosity
 - Prevents bracket drift
- Choice of packaging
 - Push syringe
 - Syringe tips
 - Jars
- Contains fluoride



Rely•a•Bond® Kits

All Rely•a•Bond® kits include:

- 14g Paste
- 9g Etchant
- 16g Primer
- Spatulas, Brushes & Mixing Pads

Rely•a•Bond® Order Information

Components		Kits	
3.5 g Paste In Syringe	#1RPP	Paste In Syringes	#RPF
14 g Paste In Tips	#RPT	Paste In Tips	#RTF
14 g Paste In Jar	#RPJ	Paste In Jars	#RJF
16 g Primer	#RPF		

Note:

- Kits and components available w/o fluoride on request

Tooth Preparation

Etchmaster®

Microetch System

Microetching Made Clean And Efficient

- Precise surface microetching
 - Increases surface retention
 - Insures properly prepped surface
 - Maximizes bond strength on all surfaces
- Preloaded cartridge tips
 - Disposable, no-mess application
 - No alumina oxide management
 - 50 micron alumina oxide
 - 2 tip sizes: Small (6 teeth) or Large (12 teeth)
- 4 Hole Handpiece
 - Standard airline attachment
 - Easy chairside engagement
 - Stainless steel construction

Clinical Applications

- Lingual bonding
- Artificial substrate bonding
- Molar prep for bonds or bands



Surface Microetching



Etchmaster Handpiece

Regular Tips



Small



Large

Lingual Tips



Small



Large

Order Information

Etchmaster® Starter Kit

Etchmaster Handpiece Starter kit includes:

- 4 Hole Handpiece Attachment
- (5) Regular Small Alumina Oxide Tips
- (5) Lingual Small Alumina Oxide Tips

Starter Kit

Etchmaster Starter Kit

#EMHA

Small Tips

Regular Tips 25 Pk	#EMTRS
Lingual Tips 25 Pk	#EMTLS
Regular Tips 50 Pk	#EMTRS50
Lingual Tips 50 Pk	#EMTLS50

Large Tips

Regular Tips 25 Pk	#EMTRL
Lingual Tips 25 Pk	#EMTLL

ASK®

All Surface Bond Enhancement Kit

Preps Any Artificial Substrate

- **MAXIMUM BOND STRENGTH WITH NO ADDITIONAL PRIMERS**

Wet or dry, normal or atypical enamel, composite, metal, porcelain, acrylic and zirconia

Order Information

ASK® Kit

ASK™ kit includes:

- 6 ml Assure® Plus
- 8 cc Porcelain Conditioner
- 1 Etchmaster® Handpiece
- (5) Preloaded Small Lingual Tips
- (5) Preloaded Small Regular Tips

ASK™ Kits

ASK® Kit

#ASK



Porcelain Conditioner

Assure® Plus

Etchmaster® Handpiece

Blue Gel Etchant

- Controlled and even application
- 37% phosphoric acid
- Excellent for lingual retention (page 16) or large acrylic appliances (page 19)
- Contains anti microbial B. A. C.



Order Information

Contains 5 g syringe Gel Etchant with 10 tips #BEGS

Liquid Etchant

- 37% phosphoric acid
- Green disclosing tint
- Regular or cherry flavor



Order Information

9 g Bottle	#EL9
23 g Bottle	#EL24
23 g Cherry Flavor	#EL24C

Gel Etchant

- 37% phosphoric acid
- Controlled application



Syringe w/ Tips



9 g Bottle

18 g Jar

Order Information

6.5 g Syringe w/ 20 Tips	#EGSS
9 g Bottle	#EG9
18 g Jar	#EG18

Porcelain Conditioner

For Bonding to Ceramic Crowns

- Effective with: porcelain, zirconia and lithium disilicate

Note:

- Ceramic bonding instructional video available at RELIANCEU.TECH



Order Information

8 cc Porcelain Conditioner #PO

**PLASTIC CONDITIONER
APPEARS ON PAGE 19**

Porc Etch™

Porcelain Etching Agent with Barrier Gel

- Preps porcelain crowns for bonding



Order Information

7 g Porc-Etch™ w/Barrier Gel #POE

Assure®

The Original Universal Bonding Resin

- Bonding primer and enhancer
- Typical or atypical enamel
- Metal and composite restorations



Order Information

6 ml Assure® Universal Bonding Resin	#AS
2 ml Assure® Universal Bonding Resin	#AS2ML

Light Bond™ Sealant

Light Cure Resin

- Bonding primer and sealant
- Available with or without quartz filler



Order Information

Bottle Volume	Regular	Filled
3 g	#LBS3F	#LBFSF
7 g	#LBS7F	#LBFS7F

Tooth Preparation

Prep Step™

Disposable Prophy Angle

144 individually wrapped and disposable Prep Step™ Prophy Angles are manufactured to run smooth and vibration free. Latex free, 4 web and soft cup are designed to fit a slow speed hand piece. Just throw away after use!



Order Information

Prep Step™ 144 Prophy Angles

#DPA

Reliance S.E.P.™

Self Etching Primer

- Etchant and bonding primer
- One step application
- Click-syringe dispenses pre-measured amounts
- Each dispensing click conditions 12-14 teeth



Order Information

S.E.P.™ Kit (contains all components)	#SEPPRO
Refill Cartridges (4 ml)	#SEPR
Click Syringe Dispenser	#SEPD
Mixing Well w/Light Impervious Shield	#1SEPW

STEP 1

Bulk Composite Reduction

RENEW® FINISHING BURS

- 18 fluted carbide
- Quick removal of bulk composite
- Gentle on enamel
- Use with or without H2O

Renew® Bur 118S



Renew® Bur 118S

#RSB

Renew® Bur 218



Renew® Bur 218

#RSB2

Renew® Bur 118L



Renew® Bur 118L

#RSBL

Renew® Bur 815



Renew® Lingual Bur 815

#RSB815

STEP 2

Residual Composite Removal

RENEW® FINISHING POINTS

- Polishes tooth surface
- Black point discloses when composite is fully removed
- Removes residual composite
- Does not create heat

Straight Hand Piece



Straight Hand Piece pack of 12

#RSPHP

Latch



Latch pack of 12

#RSPL

Friction Grip



Friction Grip pack of 12

#RSPFG

STEP 3

Finishing & Polishing

1st & Final®

Pre-Packaged Orthodontic Pumice



- Pre-packaged - sterile cups for individual patient use. Pre-mixed - just open and apply with prophy cup.
- No added chemicals - no flavoring, fluoride or oils.
- Enamel polisher - 1st & Final® can be used as the final polishing step with the Reliance Renew™ Finishing System.

Order Information

1st & Final® 200 Sterile Cups

#FF

Restore™

Diamond Polishing Paste for restoration of glaze on artificial surfaces



Order Information

2 g Syringe Restore™

#RESPP2

Lingual Retention

L.C.R.[™]

Light Cure Retainer Adhesive

- Micro+ nano fill for flowable consistency with durability of highly filled composite
- Smooth viscosity
- Cures to a glassy finish
- Patient comfort - reduced wear
- Developed for BLR applications



Order Information

5 g L.C.R. [™] Paste in Push Syringe	#LCR
1.5 g L.C.R. [™] Paste in Push Syringe w/Tips	#LCR15
5 g L.C.R. [™] Paste in Tips (11)	#LCRT5



See
Video Instruction
for Lingual Retainer Bonding
at the Reliance University website:
RelianceU.tech

GoTo[®]

Light Cure Bracket Adhesive

BLR Application

- Good working viscosity
- Increased strength



Order Information

4 g Paste Syringe	#GTP
4 g Paste In Tips	#GTT

SEE FULL DESCRIPTION ON PAGE 6

Flow Tain[™]

Light Cure Flowable Composite

BLR Application

- Thixotropic viscosity
- Cures glassy smooth
- Slumps over wire
- Fluoresces w/blacklight



Order Information

1.5 g Flow Tain [™] With Tips (10)	#FT
19 Gauge Tips (10)	#19TIPS10

SEE FULL DESCRIPTION ON PAGE 22

Assure[®] Plus

Bonding Primer
And Enhancer



BLR Application

- Enhances bond strength
- Overcomes mild contamination

Order Information

6 ml Assure [®] Plus All Surface Bonding Resin	#PLUS
2 ml Assure [®] Plus All Surface Bonding Resin	#PLUS2ML
50 Pack Assure [®] Plus 0.20 ml Unidose (10 ml)	#UAP50
100 Pack Assure [®] Plus 0.20 ml Unidose (20 ml)	#UAP100

SEE FULL DESCRIPTION ON PAGE 4

Etchmaster[®] Handpiece

Portable Chairside Microetcher

BLR Application

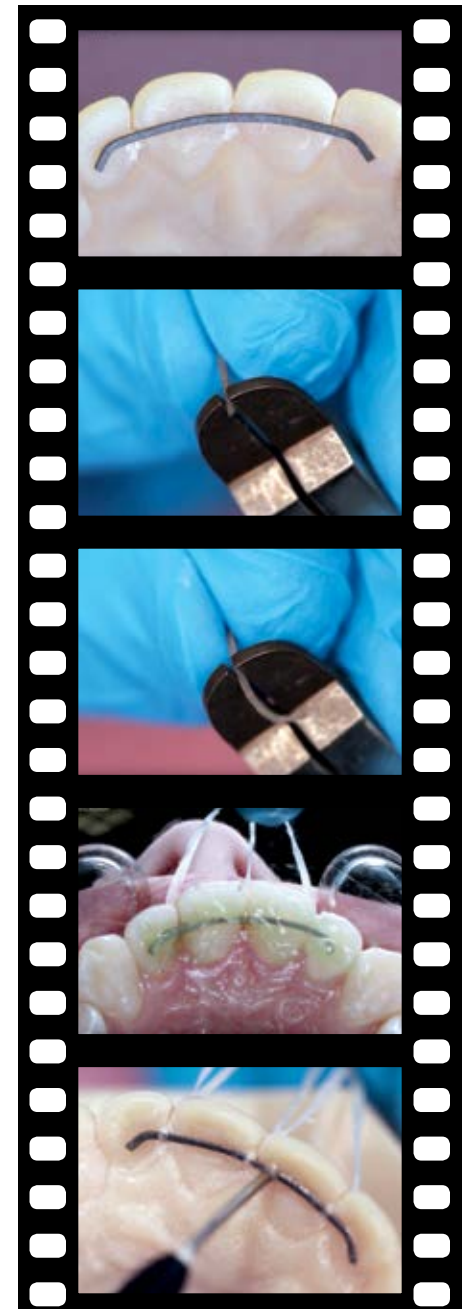
- Mechanically prepares tooth surface



Order Information

Etchmaster Starter Kit	#EMHA
------------------------	-------

SEE FULL DESCRIPTION ON PAGE 12



Ortho FlexTech® Flexible Lingual Retainer

Stainless Steel or White Gold

A New Generation in Fixed Retention

- Secure and stable long term **passive** retention
- Patented interlocking chain design
- Adapts to lingual anatomy
 - No bending or burnishing
- No models or impressions
- Flexes interproximally
 - Resists breakage and bond failures
- No reciprocal forces - allows for minor biological movement - will not take an active bend
- Stainless steel offers increased tensile and torsional strength
- Low profile - patient comfort



Patent #5964589



Clinical Applications

- 3 to 3 retention
- Periodontal splitting

Note:
- Ortho Flex Tech instructional video available at RelianceU.tech

Order Information

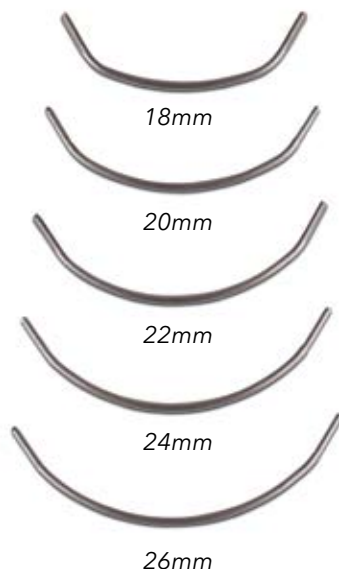
30" SS Spool	#SSOFT
30" Gold Spool (white gold)	#OFT2

EXTEND® LTR

Retention With Two Bond Points

3 to 3 Lingual Retention

- Titanium molybdenum wire
- Low profile 027 TMA wire
- Can be bonded to all 6 anteriors or to cuspids only
- Flattened and serated cuspid pads
- Preformed with cuspid offsets
- Hygiene friendly
- Nickel free



Order Information

EXTEND® LTR Starter Kit

EXTEND® LTR kit includes:

- (1) 18mm wire
- (2) 20mm wire
- (4) 22mm wire
- (4) 24mm wire
- (1) 26mm wire
- (12) Arch Measuring Devices

Starter Kit

Extend® LTR Starter Kit	#EXK
-------------------------	------

Individual Components

5 Retainers/Pkg		
18mm #EX18	22mm #EX22	26mm #EX26
20mm #EX20	24mm #EX24	Measure Device (1) #EXMD

Lingual Retention

RETAINIUM® XL

Optimum Strength Beta Titanium Retainer Wire

Fixed Retention with Titanium Molybdenum

- Flat .027" x .016" ribbon arch
- Low profile - comfortable and functional
- Increased strength
- MRI compatible
- Easy adaptation
- Nickel free titanium construction



Clinical Applications

- Fixed lingual retention
- Space maintenance
- Diastema maintenance
- Splinting

Order Information

Retainium XL - (10) 6" Wires

#XLRET

RETAINIUM®

Original TM Alloy Retainer Wire

Lingual Titanium Molybdenum Retention

- Lowest profile
- Flexes Interproximally
- .027" x .011" ribbon arch
- Nickel free
- Adaptability
- MRI compatible



Clinical Applications

- Fixed lingual retention

Order Information

Retainium - (10) 6" Wires

#RET

Bond•A•Braid®

Lingual Retainer Wire

The dead soft wire easily adapts and is excellent for semi-permanent orthodontic splinting of the upper and lower incisors, diastema maintenance and other tooth splinting

- Lingual retainer
- .027" x .011" ribbon arch wire
- 8-strand braided wire
- Dead soft - adapts easily

6" length - 10/tube



Order Information

Bond•A•Braid® 10 (6") Wires

#BAB2

Acrylic Appliance Bonding

Expanders | Herbst | Hyrax | Mara



PRE-DELIVERY PREP

Blue Gel Etch

Syringe Applicator with Tips

- Controlled application around buccolingual circumference

Order #BEGS

Full Description on page 13



Assure® Plus

All Surface Primer

- The only primer that bonds to deciduous enamel

Order #PLUS

Full Description on page 4



Plastic Conditioner

Acrylic Prep

- Initiates bond between appliance and adhesive
- 10 g bottle

Order #PL



CEMENTS

Band Lok® Dual Cure*

Self Mix Syringe

- Order #SMBL - Natural
- Order #SMBLB - Blue

Full Description on page 9



Ultra Band-Lok®

Light Cure

- Order #UBLPP - Natural
- Order #UBLBPP - Blue

Full Description on page 8



Excel®

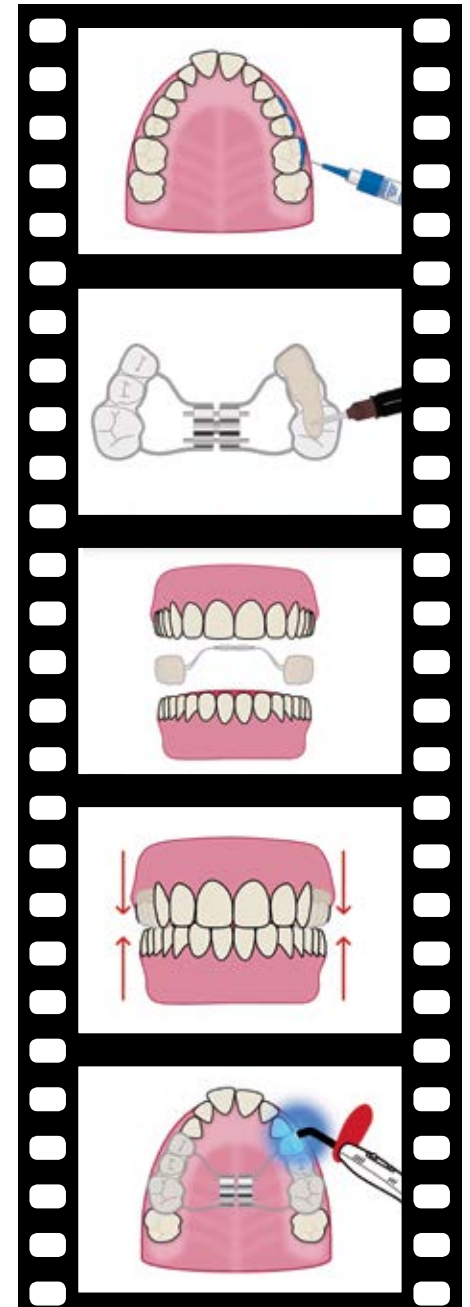
Chemical Cure

- Order #1ERSAF & 1ERSB

Full Description on page 11



See
Video Instruction
for Acrylic Appliance Bonding
at the Reliance University website:
RelianceU.tech



Bond Aligner®

Light Cure Aligner Adhesive



Bonds Attachments To Clear Aligners

- Secure aesthetic bonds
- Bond to any clear aligner material
- No primers or conditioners
- Clear light cure paste
- High modulus of elasticity
 - Conforms to aligner distortions
 - Secure bonds throughout
- Bond ceramic, metal or plastic attachments



Order Information

1.4 g Bond Aligner® Syringe With 5 Tips

#BA

Clinical Applications

- Button or hook bonding to aligners
- Facilitates elastic engagement to aligners

Button Hook

- Mini Mold® button form
- Effective With Aligners
- Aesthetic Solution To Metal Button



Button Hook Attachment

Sold Individually
#ABUT

O.V.S.™

Orthodontic Veneer System



Before OVS Treatment



After OVS Treatment

Order Information

O.V.S.™ Kit

O.V.S.™ kit includes all components #OVS:

- Faci Form Crown Form #12 Left (5 med & 5 large) #FFL
- Faci Form Crown Form #22 Right (5 med & 5 large) #FFR
- 2.5 g Ortho Veneer™ Paste Shade A-1 #OVPA1
- 2.5 g Ortho Veneer™ Paste Shade A-2 #OVPA2
- 2.5 g Ortho Veneer™ Paste Shade B-1 #OVPB1
- 3 cc Light Bond™ Sealant #LBS3F
- (16) Stick-n-Place instruments #SNP16

Peg Lateral Treatment

Orthodontic cases often present the need to bond an attachment to a peg lateral or an undersized tooth. O.V.S.™ provides a complete in-office system that creates an aesthetic and properly sized temporary veneer suitable for bonding. This saves you and your patients time during treatment and money by eliminating the need for a full temporary crown.

C&C™ Composite and Chain System

Molded Base And Chain Extrusion System



Product Features

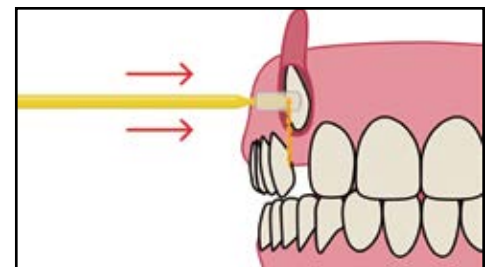
• UNPARALLELED STRENGTH

The C&C™ System does not use protruding metal attachments. Our patent pending design molds a base with composite - adapting flush to any palatal or buccal exposure.



• PAINLESS REMOVAL

Instead of painfully breaking a bracket off a mobile tooth - the C&C™ is ground down with a bur - resulting in less patient discomfort.



Note:

- C&C instructional video available at RELIANCEU.TECH

Order Information

- 1 Disposable Large Attachment Mold with Chain #DCCP
- 1 Disposable Small Attachment Mold with Chain #DCCO
- 1.5 g FlowTain™ Flowable Composite #FT

Perfect•A•Smile® Pontic Paint

Immediate Restorations And Space Maintenance

Quick and Economical Aesthetic Solution

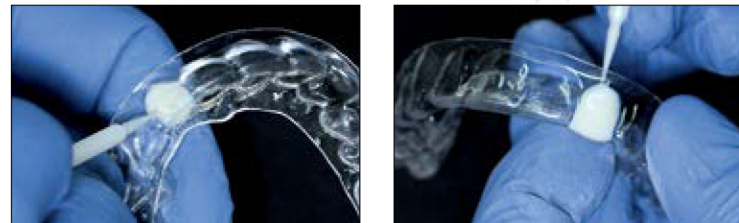
- Light cure paste in 10 shades
- Applies smoothly to clear aligner sockets
- Translucent to match enamel
- High elasticity modulus
 - Will not crack or splinter
- Bonds to any clear aligner
- Quick and economical
 - Same day fix
 - No doctor chairtime
 - No lab fees or delays
- Complete in-office system
- Easy temporary bridge

Actual Treatment Photos



Clinical Applications

- Eliminates flippers
- Temporary restorations
 - Congenital, trauma
 - Pre-pontic, peg laterals
 - Grafting, implants
- Space maintenance
- Aesthetic restorations
 - Single tooth
 - Partial or full arch



Note:
- Pontic Paint instructional video available at RelianceU.tech

Order Information

Full Kit - All 10 Shades + Applicators + Putty

New Shades Coming Soon!

* 4 g Jar PP/Bleach	
4 g Jar PP/A1 Shade	#PPA1
* 4 g Jar PP/A2 Shade	#PPA2
* 4 g Jar PP/A3.5 Shade	
* 4 g Jar PP/B1 Shade	#PPB1
4 g Jar PP/C1 Shade	
4 g Jar PP/C4 Shade	
4 g Jar PP/D3 Shade	
* 4 g Jar PP/Light Shade	#PASL
* 4 g Jar PP/Medium Shade	#PASM
Super Fine Micro Brushes (100)	#MBSF

* Most Popular Shades

Vita Shade Guide References

Perfect•A•Smile® Pontic Putty

Light Cure Formable Paste

Fingertip Pontic Fabrication

- Light cure composite paste
- Putty-like consistency
- Facilitates tooth shape formation
- Eliminates pontics, wax & PVS
- Bonds tenaciously to stone/resin models
- Provides proper clear aligner anatomy

Clinical Applications

- Pontic formation by hand
- Bridges/fills gaps in model
- Facilitates proper aligner formation



Order Information

5 g Paste In Syringe #LBOPS

Custom Base Model Adhesives

Therma-Cure™

Heat Curable Lab Adhesive for Custom Base Indirect Bonding

- Tacky Paste Viscosity
- Unlimited Working Time
- Heat Curable
- Highly Filled Composite



5 g Therma-Cure™ Syringe

#TC

Light Bond™ Adhesive

Light Cure Bracket Adhesive

- For bonding to model
- Viscous paste to eliminate drift



SEE FULL DESCRIPTION ON PAGE 7

5 g Light Bond™ Paste in Push Syringe with fluoride

#LBPPF

Custom Base Transfer Adhesives

Flow Tain™

Light Cure Flowable Microfil Composite



- Needle Tip Dispenser
- Using the tips provided, these materials are easily injected onto custom pads
- Low modulus of elasticity to resist breakage
- Highly filled to bridge gaps between custom pads and tooth surface

1.5 g Flow Tain™ with Tips

#FT

19 gauge Tips (10)

#19TIPS10

Custom I.Q.™

Custom Base Fast Set Indirect Bonding Sealant

- 1 part placed on tooth, opposite placed on custom pad
- Chemical cure system pad
- Fast set time



REFRIGERATION REQUIRED

7 g Custom I.Q.™ Sealant A with fluoride

#CIQA

7 g Custom I.Q.™ Sealant B

#CIQB

Maximum Cure® Sealant

Indirect Bonding Sealant

- 90 Second working time
- Excellent molecular conversion rate
- Self curing



REFRIGERATION REQUIRED

7 g Maximum Cure® Sealant A with fluoride

#MC7AF

7 g Maximum Cure® Sealant B

#MC7B

7 g Maximum Cure® Filled Sealant A with fluoride

#MCF7AF

7 g Maximum Cure® Filled Sealant B

#MCF7B

20 g Maximum Cure® Sealant A with fluoride

#MC20AF

20 g Maximum Cure® Sealant B

#MC20B

Clean Base Transfer Adhesives

Excel®

Chemical Cure Specialty Adhesive

- Unsurpassed bond strength
- Thin, creamy consistency
- Facilitates clean base penetration
- Three minute working time
- Contains fluoride



Paste A



Paste B

Excel® Regular Paste A in 6 g Screw Syringe with fluoride

#1ERSAF

Excel® Regular Paste B in 6 g Screw Syringe

#1ERSB

Light Bond™ Thin Adhesive

- Low viscosity paste
- Facilitates clean base penetration
- Micro filled composite
- Light cure - no mixing



5 g Light Bond™ Thin Syringe

#LBTPPF

Disposable Benda Brushes

- Sealant and enhancer applicators



1 1/2" Benda Brushes (250) #BB250

Brush Handle And Tips



Brush Handle #BH
Brush Tips (250) #BT250

Sponge Pellets

- Etchant applicators



Sponge Pellets (500) #SP

Micro Brushes



Micro Brushes (100) #MB
Super Fine Micro Brushes (100) #MBSF

Nylon Mixing Spatulas



Spatulas (50) #S

Mixing Pads



Disposable Mixing Pads (1) #1PADS

Mixing Well



Mixing Well #1MXW

S.E.P. Mixing Well



S.E.P. Mixing Well with Light Impervious Shield #1SEPW

Mark II CR Syringe

- Used with pre-loaded adhesive tips



Mark II CR Syringe #CRII

UVEX Eyewear

- Fits over prescription eyeglasses

Uvex Ultra Spec® 2000



Uvex Ultra Spec® 2000 #SGU

Skyper® Eyewear

- Low profile

Uvex Skyper®



Uvex Skyper® #SG

Diamond Bur 129

- Prep bur
- Roughens surface



Other burs appear on page 15

Diamond Bur 129 #DB

Access™ Retractor

- Sterilize with dry heat or autoclave



Access™ Adult Cheek Retractor #CH1
Access™ Pedo Cheek Retractor #CH2

Technique Cards

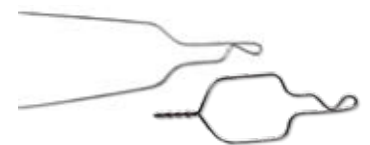
- Chairside reference for all bonding scenarios



This item is non-returnable

Chairside Bonding Technique Cards #TECH

Kobayashi Ties



Tie Hooks - .010 100/Pkg #K10
Tie Hooks - .012 100/Pkg #K12
Tie Hooks - .014 100/Pkg #K14
Pre-Twisted - .012 100/Pkg #SK12
Pre-Twisted - .014 100/Pkg #SK14

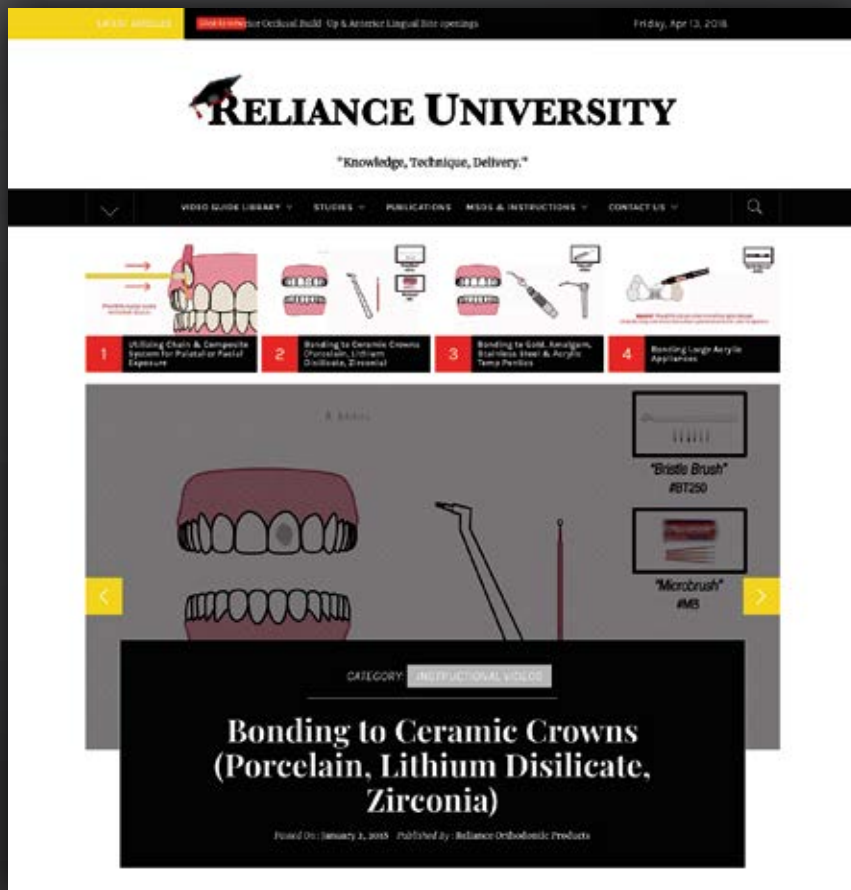


RELIANCE UNIVERSITY

<http://RelianceU.tech>

SCHOOLS IN SESSION!

FIRST OF ITS KIND ORTHODONTIC EDUCATIONAL AND TRAINING GUIDE



TRAINING VIDEOS

LITERATURE SUPPORT

WEBINARS & LIVESTREAMS

SCIENTIFIC STUDIES

LOG IN NOW!

[HTTP://RELIANCEU.TECH](http://RELIANCEU.TECH)



US FDA REGISTERED

Health Canada REGISTERED

Certificates available upon request

